
Introduction on VMS 3.0 New Features

Application Notes

Version <1.0>



Technical Support Team

The Surveon enterprise VMS 3.0 features the large data backup and archiving functions, allowing recently recorded videos to be moved to long-term storage arrays to avoid risks of corruption on the live disks.

Moreover, retrieval can be achieved from both local and remote locations, making it efficient for large data management and multi-site security operations.

Video files can also be stored in the remote iSCSI or NAS storage to guarantee data integrity and longer retention periods.

With the newly launched, web-based system monitoring tool, SurveOne, the health of the overall systems, including NVRs, cameras, and storage is constantly monitored and thus the system stability can be achieved.

To simplify setup, SurveOne enables users to copy the hardware configurations and apply them to other devices to save time and efforts. For easy maintenance, the 3 level-classified real-time event logs, critical errors, errors and warnings, allow users to take action efficiently, and thus mitigate risks and reduce losses.

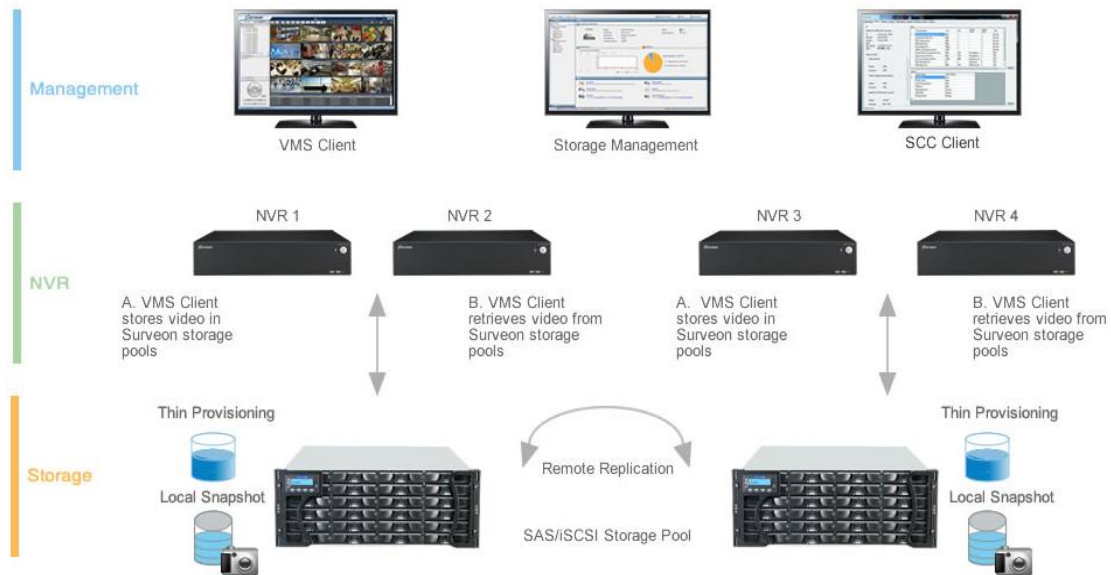
- Backup to iSCSI storage (archiving to iSCSIstorage)
- Recording to iSCSI storage
- NVR system health check and monitoring
- OnScreen PTZ control
- Live object counting results
- APC SMART-UPS supported
- SurveOne web-based system management tool supported

1. Backup to iSCSI storage (archiving to iSCSI storage).

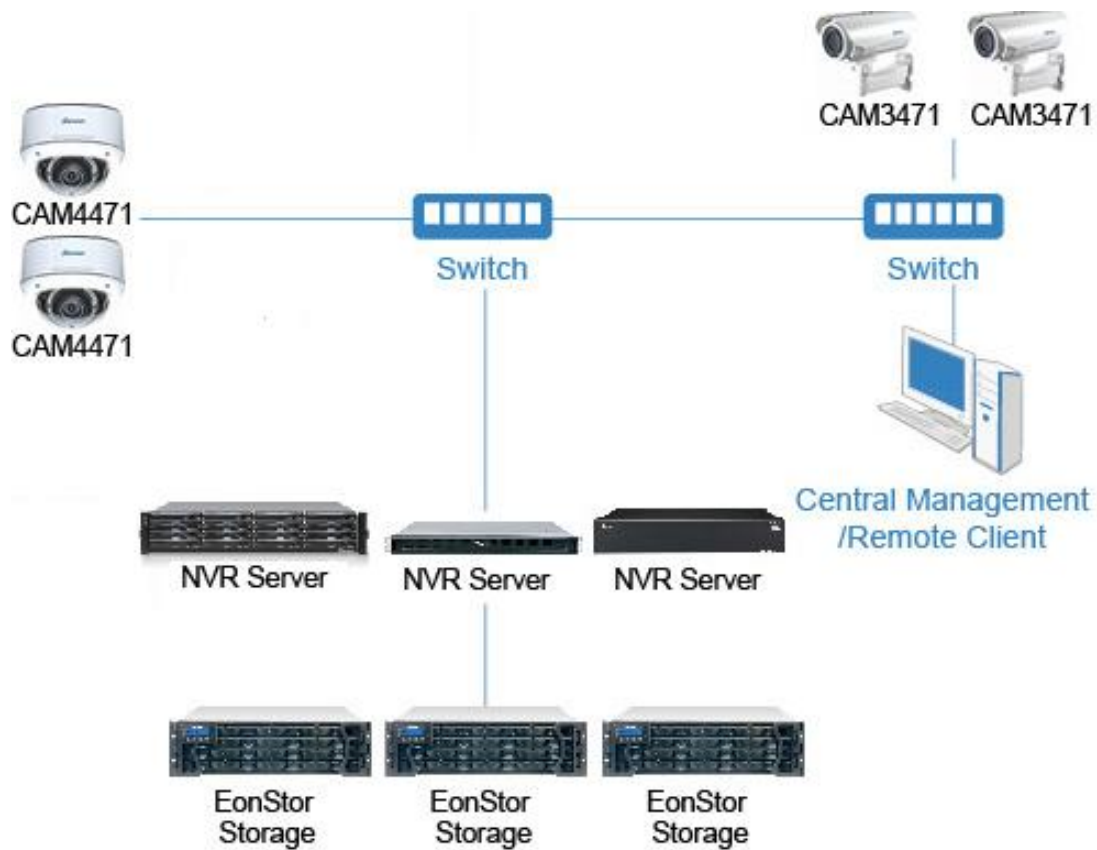
Surveon VMS 3.0 can backup and archive the recorded video to iSCSI storage.

Local and remote backups are available for easy expansion of video retention period.

Archiving with playback function is supported to ensure data integrity, improve operational efficiency, and simplify disaster-recovery operations.

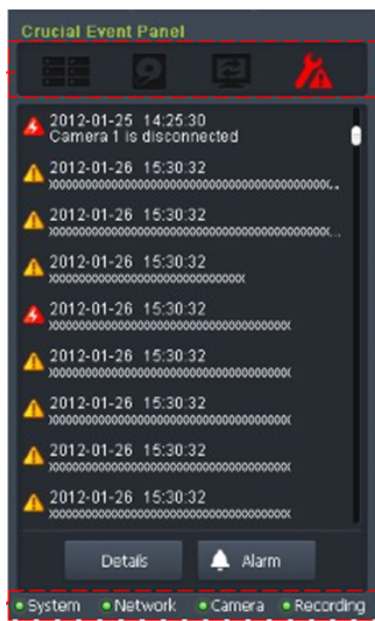


Surveon VMS 3.0 can record and be saved on both the local disks and iSCSI storage to expand the space.



2. NVR System Health Check & Monitoring

Surveon VMS supports real-time NVR system health check, UI monitoring, and real-time system event alarm information.

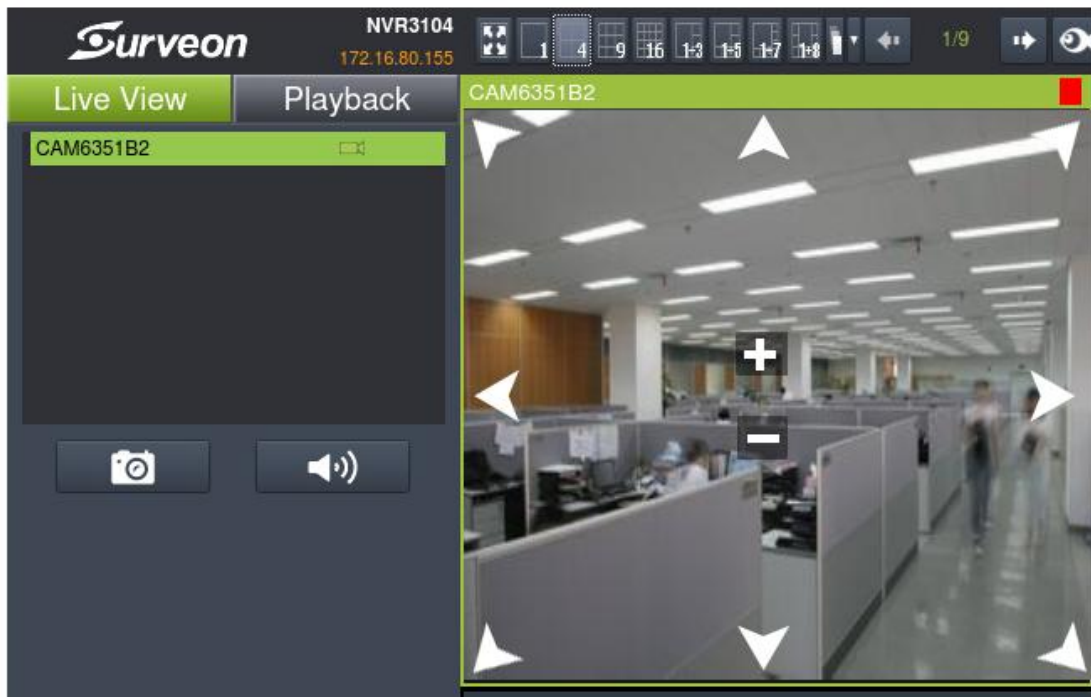


RAID: RAID degraded or RAID failed/error
Disk: Disk failed/error
Service: NVR server/stream server/domain server/VI server stopped
Fan/Power : Fan or power module failed

System: CPU or memory usage too high
Network: Network disconnected
Camera: Camera disconnected
Recording: Recording stopped

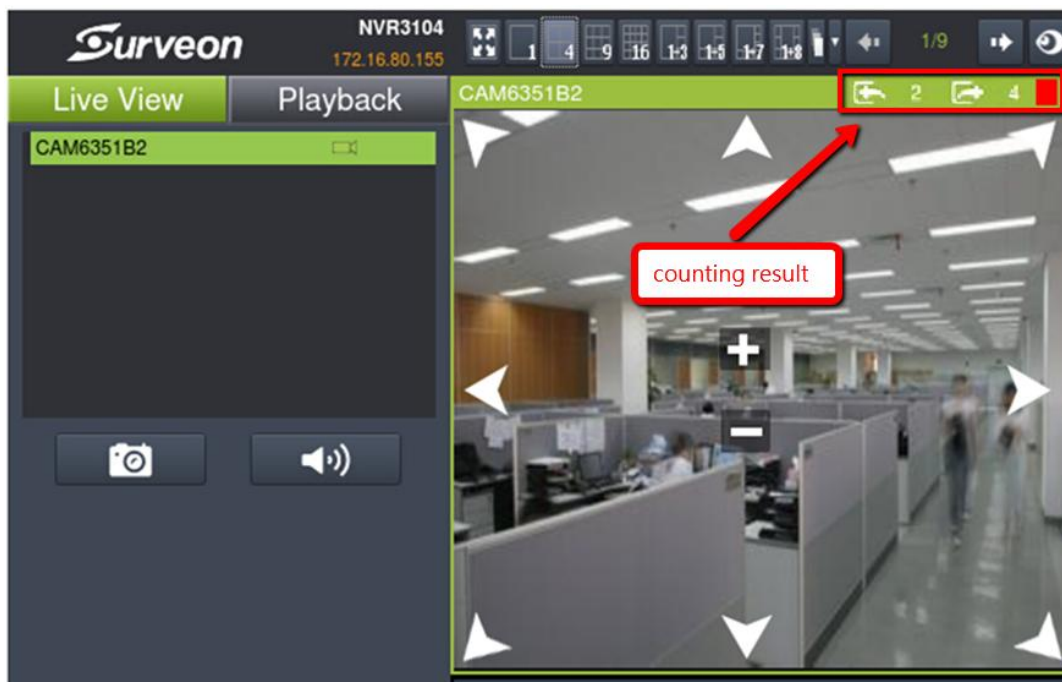
3. OnScreen PTZ Control

Surveon VMS 3.0 can control PTZ on the live video directly. (This function is only for cameras that support PTZ feature.)



4. Live Object Counting Results

Object counting results can be displayed on the live video (setup required).



5. APC SMART-UPS Supported

Surveon VMS 3.0 supports UPS (Uninterruptible Power Supply) to ensure continuous recording and survive power outages.



6. SurveOne web-based system management tool supported.

SurveOne Specifications:

System Monitoring	<ul style="list-style-type: none">■ NVR/camera system status overview■ NVR device/network/storage real-time status monitoring■ Camera real-time status monitoring
Configurations	<ul style="list-style-type: none">■ Easy NVR/camera configuration copy■ Easy NVR/camera configuration backup/restore
Event Log	<ul style="list-style-type: none">■ NVR/camera real-time event log information■ Critical error/error/warning multi-level event classifications



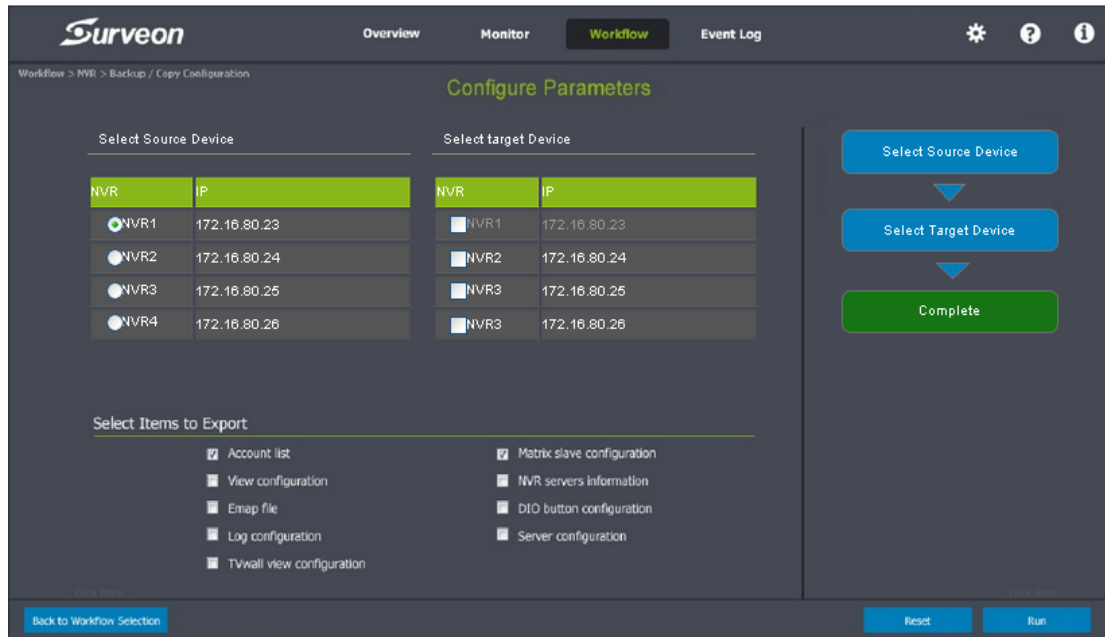
SurveOne: Real-time System Status Monitoring

- Overall status of NVRs, cameras, and storage is displayed graphically, allowing users to grasp how the systems are at a glance.
- Users can check detailed information, including NVR status, network connectivity, storage capacity, and camera status.



SurveOne: Easy Configuration and Maintenance

- One-time setup: users can simply copy the NVR or camera configurations and apply them to new devices to ease the complicated setup process.
- Configurations can also be saved as backup and restored when needed.



SurveOne: Real-time Classified Event Logs

- NVR and camera event logs are presented in real-time and classified into 3 groups: critical error, error, and warning.
- Users can identify which event needs to take actions first and which not to respond to the situations more quickly and efficiently.

NVR	Type	Severity	Date / Time	Event
NVR3000	IT_2	Critical	2014-07-16 14:50:35	Controller failure or shutdown detected (slot A)
Server_01	IT_2	Critical	2014-07-16 15:05:35	Controller failure or shutdown detected (slot A)
IFT_Server	IT_2	Critical	2014-07-15 14:15:12	Controller BBU charger entered self-protection state (slot B)
MIS	IT_2	Error	2014-07-16 14:50:35	Camera 2 disconnected
Surveon_1	IT_2	Error	2014-07-16 12:50:35	Camera 3 disconnected
	Server_01	Critical	2014-07-16 14:50:35	Controller BBU charger entered self-protection state (slot A)
	Server_01	Critical	2014-07-16 13:50:35	Controller failure or shutdown detected (slot A)
	Server_01	Error	2014-07-16 12:50:35	Camera 1 disconnected
	Surveon	Error	2014-07-16 12:50:35	Camera 5 video loss
	IT_2	Warning	2014-07-16 14:50:35	Controller Default Write Policy Restore (slot A)
	IT_2	Warning	2014-07-16 15:05:35	Camera 3 video loss
	IT_2	Warning	2014-07-15 14:15:12	Camera 2 disconnected
	IT_2	Warning	2014-07-16 14:50:35	Camera 1 disconnected
	IT_2	Warning	2014-07-16 12:50:35	Camera 3 motion detection trigger
	IT_2	Warning	2014-07-16 12:50:35	Camera 6 motion detection trigger

For 3.0 version, it is necessary to download the SurveOne software and install it in a workstation. For future versions, VMS will include SurveOne in; thus no installation will be needed.



More information about SurveOne, please refer to the application notes:

http://www.surveon.com/doc/application/AN_SurveOne_feature_introduction.pdf

SurveOne Download link:

<http://www.surveon.com/support/firmware.asp#SurveOne>

SurveOne

Supported Model	Firmware Version	File size	Firmware Download	Release Note	Upgrade Procedure
NVR3104, NVR3308, NVR5316, SMR8300, SMR2100	Firmware version higher than 3.0 (include 3.0)	37.97 MB	*		

*Please contact Surveon Sales (sales@surveon.com) to get the download file.